

# Could 10 Minutes Save Your Life?



**Advanced  
Screening**



Value in Partnership  
with GE Healthcare.

*Painless and accurate screenings offered by a Michigan company dedicated to serving you.*

With over 20 years of vascular imaging experience, Advanced Screening is the best vascular and heart screening organization in the state of Michigan – saving lives and helping to prevent heart disease and stroke for the past 7 years.

**EASY ACCESS - Parking Ramp Next Door Validated**

Where: **SPONSORED BY GRCC WELLNESS TEAM**  
**GRCC Student Community Center**  
**Multipurpose Rm #234 AB**

122 Lyon St NE / corner of Lyon & Ransom Ave NE  
Grand Rapids, MI 49503

When: **Monday, April 2, 2007 and**  
**Tuesday, April 3, 2007**

*\*Access your Health Savings Account or Flex Plan*

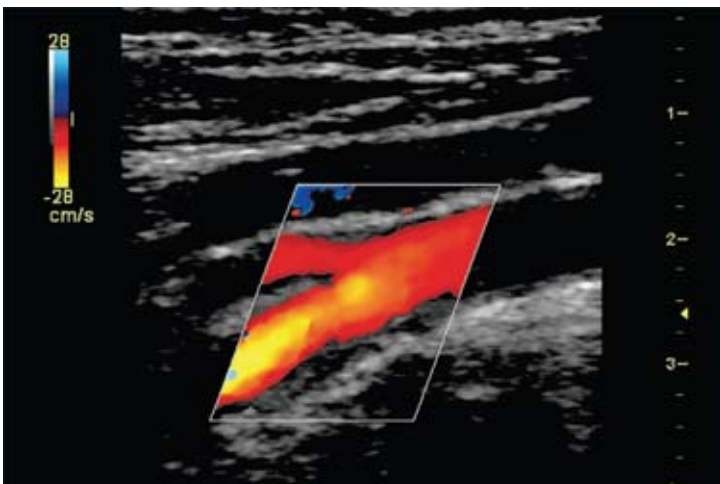
*Pre-registration is a must.*

*Call 1-800-541-8110 for your appointment or for more information.*

# 1-800-541-8110

**WRITTEN RESULTS GIVEN IMMEDIATELY**

All positive results reviewed by our board-certified Medical Director



- Carotid Artery Visualized with Duplex Ultrasound
- Gold Standard for Stroke/Heart Risk
- Visualizes and Measures blood flow

## Carotid Artery Screen

Utilizes ultrasound imaging to look into the artery for possible blockage. Each year 700,000 Americans have a stroke, the country's leading cause of disability and the third leading cause of death. Eighty-eight percent of strokes are ischemic, in which blood flow to the brain is blocked.

\$45.00

# 1

## Abdominal Aorta Screen

Utilizes ultrasound imaging to measure the aorta for a possible aneurysm - an abnormal enlargement of the main artery in the abdomen.

\$45.00

# 2

## Leg Circulation Screen

Utilizes Doppler ultrasound to determine possible blockages in the main arteries of the legs. An Ankle Brachial Index is obtained to screen for possible peripheral arterial disease.

\$40.00

# 3

## Heart Screen

Actually see your heart in motion. Utilizes ultrasound imaging (echocardiogram) to evaluate the heart muscle, size, chambers and valves. Screens for possible:

- Valvular Disease
- Wall motion abnormality
- Enlargement
- Damage from High Blood Pressure
- Abnormal Fluid
- Congenital Defects

\$80.00

# 4

## Full Lipid Blood Cholesterol Screen

- Total Cholesterol
- High Density Lipoproteins (HDL) - Good Cholesterol
- Low Density Lipoproteins (LDL) - Bad Cholesterol
- Triglyceride
- HDL/TC Ratio

**12 HOUR FAST REQUIRED**

\$40.00

# 5

## Electrocardiogram (EKG)

Utilizes the Elite Burdick II EKG unit - 12 lead computer-assisted interpretation of the electrical impulses of the heart.

\$40.00

# 6

- Complete Heart Health Screening: Screens 1 through 6 - \$239.00
- Complete Vascular and Heart Screening: Screens 1 through 5 - \$199.00
- Complete Vascular + Heart Screen: Screens 1 through 4 - \$179.00
- Complete Vascular Screening: Screens 1, 2 & 3 - \$99.00

Note: Health Insurance generally does not cover the cost of these screenings



Telephone prepayment not necessary